

Newport City Homes

Lliswerry Ward Update

Winter 2023/24

Hello!

Happy New Year and welcome to our latest newsletter for the Lliswerry ward.

We'd like to update you on what we've got going on in your area, we have made great progress through a very wet couple of months...

Cwrt Y March

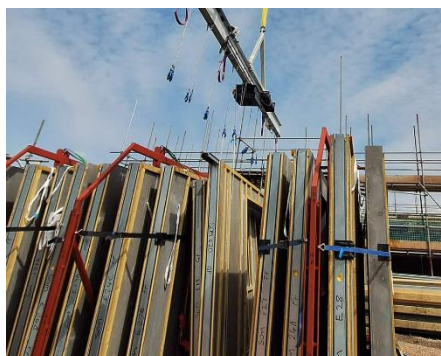
Cwrt Y March is the official new name of the development of 8 homes at the site of the former Black Horse Inn on Somerton Road. It's due to be completed at the end of February.

This development is an exciting one, as we're aiming for net zero carbon, with very low running costs for the customers who move in. These new homes have solar panels with batteries, which means renewable solar energy can be stored in the day and used at peak times.

We are the first in Wales to use an innovative type of wall panel designed and made by leaders in sustainable building, Etopia. These panels are extremely well insulated, fire resistant and strong. They are quick to install, and the system reduces waste on-site too which means we can keep the disruption to a minimum.

1ST

We're the first
in Wales to
use this new
sustainable
building frame



If you have any questions about the site you can contact the site manager Steve Sinclair on:

ssinclair@ysprojects.co.uk
Tel: 07939 823 25

Llys Victoria

You might have noticed the new homes on the site of the former Victoria Inn are really starting to take shape, in fact the scaffolding will be coming down in the next couple of months! We're hoping to stay on track and be finished by the Spring.

With the cladding and render nearly done, work will soon start on the inside, where we'll be plastering and decorating as well as fitting the kitchens and bathrooms. Solar panels have also been installed on the roof to help keep energy costs down for our future customers.



5 two-bed

13 one-bed
apartments



CASTELL CONSTRUCTION
Property Development Specialists

In association with Castell Group

Sion Kinsey is the site manager running this project. If you have any questions about the site, you can contact Sion on:

Email sion.kinsey@castellgroup.co.uk

Tel. 07585 057 059

Longmeadow

You may remember that work at Longmeadow stopped in June 2021, after a water pipe was discovered on the site.

We are pleased to tell you that after working closely with Newport City Council, Natural Resources Wales and Welsh Government, our revised plans have been approved and our contractor Hale will be back on site in February this year, setting up to get started with the build.



Scan this code with your tablet or smartphone to see the demolition of Longmeadow Court

28 one-bed apartments

5 two-bed houses

2 four-bed houses



In association with Hale



In your community

We supported Christmas parties at Moorland and Alway baby and toddler groups, where over 250 kids and parents attended to enjoy Santa visits, a disco, arts and crafts, along with tasty turkey rolls and hot dogs. The hard working community groups do such an important job, bringing people together and we're proud to support them. Here's what some of the local families had to say:

"I absolutely loved it, thank you for having us at the group. Dottie has a lovely little group of friends, and so do I because of your fab little group"

"Thank you for a great party, thank you all for what you do for us"

Safer transport options

When we're doing construction work we always look for opportunities to help improve the local area.

So we're working with Newport City Council to make the bus stop near the Black Horse site wider, and adding a more substantial shelter so people can wait safely and comfortably for the bus.

Interested in applying for
community benefit funding?

Maybe you run a community group
or sports team that needs a little
help?

Let us know, and we can send you
an application form!

 newportcityhomes.com

  [NewportCityH](https://www.facebook.com/NewportCityH)

 enquiries@newportcityhomes.com

 01633 381111