

NCH has various working locations, your interview location will be detailed in your invite to interview email.

An overview of useful information about each location is listed below:

## **Nexus House**

**Address:** Newport City Homes, Central Office, Nexus House Mission Court, Newport, NP20 2DW

**Parking:** at Asda opposite (free for 3 hours)

**Nearby:** Asda, Greggs, Health Hut & Costa

**Building accessibility:** Disabled access with ramp on front and back of building

**What to do:** On entering the building you will need to sign in at reception and ask for the interviewing manager as detailed on your invite email.

**Toilets:** Including disabled access are available on this floor.



## **Malpas**

**Address:** 220 Malpas Rd, Newport NP20 6GP

**Parking:** Outside of the building

**Nearby:** Tesco Express, Greggs, Subway, Dominos, Pharmacy

**Building accessibility:** Disabled access with ramp on front of building

**What to do:** On entering the building you will need to sign in at reception and ask for the interviewing manager as detailed on your invite email.

**Toilets:** Available on the first floor (no disabled access).



## **@195**

**Address:** 195 Upper Dock St, Newport, NP20 1DB

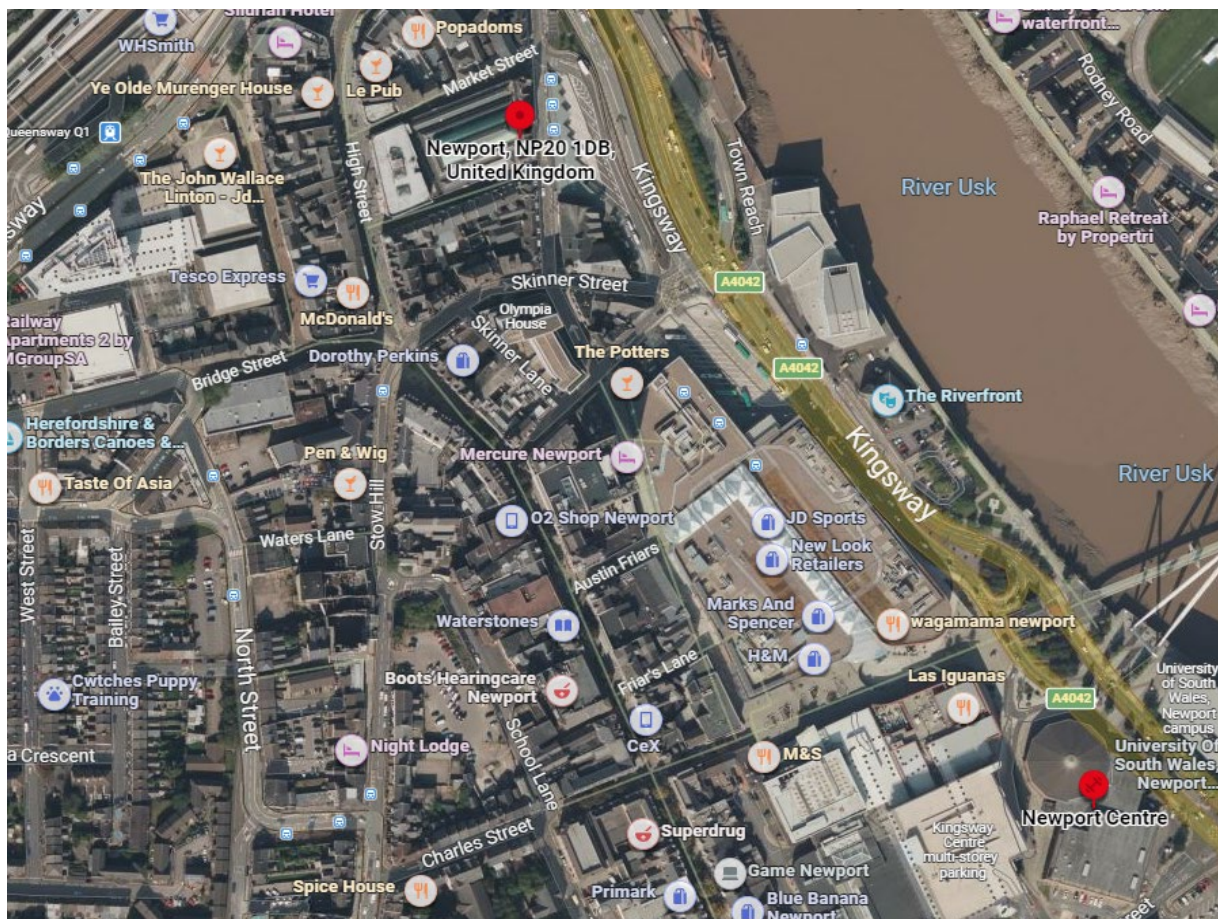
**Parking:** Friars Walk car park (pay on exit), Kingsway car park (pay on exit)

**Nearby:** City centre with various shops and Newport bus depot

**Building accessibility:** Disabled access with ramp on front of building

**What to do:** On entering the building you will need to sign in at reception and ask for the interviewing manager as detailed on your invite email.

**Toilets:** Including disabled access are available on this floor.



If you have any queries regarding your interview please contact the recruitment team:  
[recruitment@newportcityhomes.com](mailto:recruitment@newportcityhomes.com)