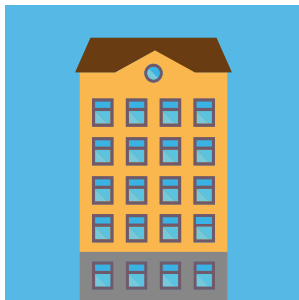
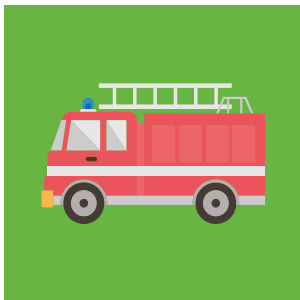
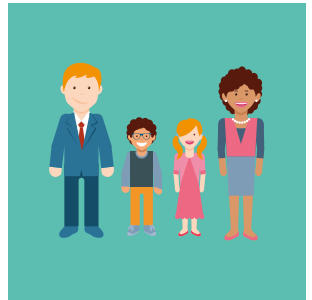
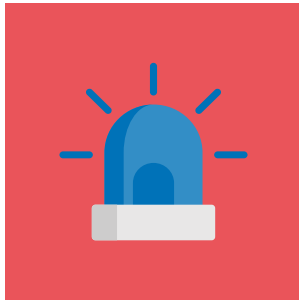


Fire Safety Advice for Tower Blocks

This booklet has important information to help keep you, your family and your neighbours safe.



How safe is my flat?

Your safety is our priority. This booklet explains:

- The safety features within your tower block
- What we do to help keep you safe
- What you can do to help keep yourself, your family and neighbours safe

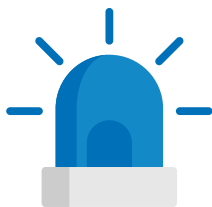
Fires rarely occur and when they do they very rarely spread further than one or two rooms.

To slow the spread of fire, there is a one-hour barrier between each floor in your tower block and half an hour in the walls of each flat. Your flat is fitted with fire resistant doors that will withstand fire for half an hour.

These barriers provide enough time for the fire service to attend an incident and put out a fire before it has a chance to spread.

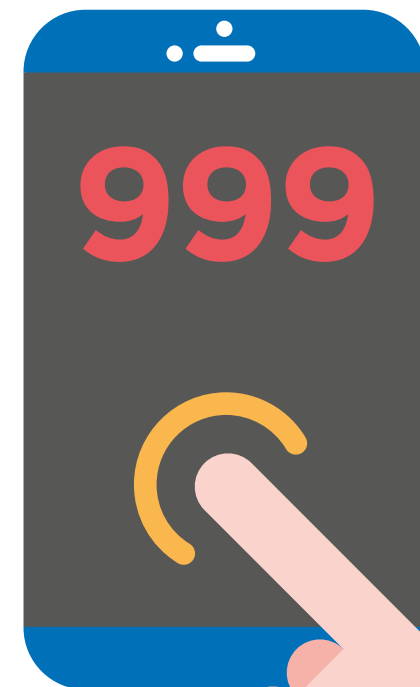
If you are affected by heat or smoke it is crucial that you leave your flat immediately raising the alarm by calling 999.

If the fire is in your home, you should evacuate and call 999. If the fire is somewhere else in the building and you are not in immediate danger, you should call 999 and 'stay put' until the fire service can evacuate you safely.



What do I do if there's a fire in my flat?

- If the fire is in your home, you should **evacuate and call 999**.
- If the fire is somewhere else in the building and you are not in immediate danger, you should **call 999 and 'stay put'** until the fire service can evacuate you safely or tells you to evacuate.
- As you leave the building try, if possible, to **close doors behind you**.
- **Use the stairs**, not the lifts, and evacuate the building through the fire exits.
- **Do not** try to tackle the fire yourself.
- **Follow any instructions** from the fire service.
- If you have left the building, **do not return to your flat** until the emergency services have given the all clear.



What do I do if I hear the fire alarm?

- Never assume someone else has called the emergency services.
- If the fire is not in your flat, you are usually safer to stay in your flat, unless you are affected by heat or smoke.
- Call the emergency services on 999 and say you need the fire service. You will need to provide your name, address and inform them that the fire alarm is sounding.

What if I can't get out because the fire is blocking my escape?

- Plan a 'safe area' in your flat in case you cannot escape. It is best if it has a window, telephone and access to water.
- Put wet clothing, towels or bedding around the bottom of the door to block any smoke.
- If you have access to water, wet the door if it becomes hot.
- Open the window and wave a sheet or something similar to get the fire service's attention. You could also use the torch on your mobile phone if you have one.

How we keep you safe

We carry out regular training exercises with South Wales Fire and Rescue Service on our tower blocks to make sure that during an emergency firefighters can respond quickly.

In addition to this, we carry out regular fire safety checks, including:

- ✓ Fire alarm systems
- ✓ Smoke alarms
- ✓ Emergency lighting
- ✓ Electrical safety
- ✓ Dry risers
- ✓ General housekeeping



Evacuation assistance

If you might need help to get out in an emergency, please let us know by calling **01633 381111**.

With your permission, we will share this information with the fire service so they know who needs help to evacuate.

The dos and don'ts of tower block living



Do:

- ✓ Keep the fire doors closed. They will help to slow the spread of fire and give you extra time so you can safely exit the building.
- ✓ Keep landings and corridors free of objects and rubbish, particularly flammable items, that would obstruct people's exits.
- ✓ Make sure that cigarettes are extinguished properly.
- ✓ Place rubbish in small bags when using the refuse chute. A blocked chute can back up quickly and become a fire hazard.



Do not:

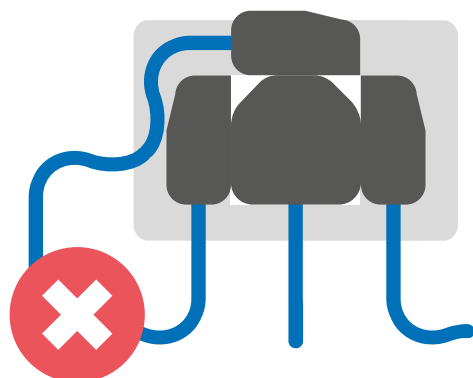
- ✗ Store gas cylinders, paraffin or other highly flammable liquids in your flat.
- ✗ Park or block access to tower block flats. Access roads and gates allow the fire service's vehicles to get as close as possible to the building.
- ✗ Wedge doors open. Remove wedges if you find them.
- ✗ Leave objects on landings.
- ✗ Give access to people you do not know. Only allow access to people visiting you.
- ✗ Smoke in communal areas, including the landing and lifts. It is against the law to do so.
- ✗ Place candles on or near materials that could burn or catch fire (for example, curtains).



Electrical safety advice

Remember:

- Do not overload sockets – use one plug in each socket.
- Do not plug an extension lead into another extension lead.
- Keep electrical leads, plugs and appliances away from water.
- Never buy an electrical appliance without knowing it is safe to use. If the appliance is second-hand, always have it checked by a qualified electrician before you use it.
- Switch off and unplug electrical appliances if you are not using them, unless they are designed to be left on.



- Store electric blankets either flat or rolled to protect the electrical wiring.
- Position portable heaters against the wall; never place them along your escape route or near flammable items.
- Lights and bulbs can get very hot, be careful where you position them.
- Always use the correct fuse rating for the appliance being used.
- Be careful when using plug-in air fresheners.



Smoke alarms

A smoke alarm is a warning device that detects smoke at the earliest stage of a fire. It gives you vital time to get out.

We test and inspect smoke alarms as part of our annual safety inspection.

Do not put a smoke alarm in the kitchen or bathroom as it can be set off accidentally.

Remember to test your alarm weekly and never remove the unit from the base. Take special care when carrying out painting near a smoke alarm to ensure you do not paint over the expiry date label attached to the outside of the unit.



If your smoke alarm is faulty, you must report it immediately. You can do this by contacting us on **01633 381111** or by making a repair request at www.newportcityhomes.com

Cooking safely

Kitchen fires are the most common causes of accidental house fires in Wales. Each year cooking causes about 1,000 fires in flats. Help to stay safe by following this advice.



- Never leave your cooking unattended.
- Do not use matches or lighters to light gas cookers. Spark devices are safer.
- Keep electrical leads and items that can catch fire easily away from the cooker and toaster.
- Keep the oven, toaster, hob and grill clean. A build-up of fat, crumbs and grease can catch fire.
- Keep electrical leads and appliances away from water.
- Ensure you use appliances following the manufacturer's guidelines.

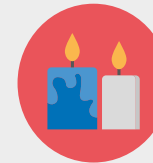
The fire service's top ten tips for staying safe

1 Fit a smoke alarm and check it regularly



2 Make a fire action plan so that everyone in your flat knows how to escape in the event of fire

3 Take care when cooking with hot oil and think about using thermostatically controlled deep fat fryers



4 Never leave lit candles unattended



5 Ensure cigarettes are stubbed out and disposed of carefully

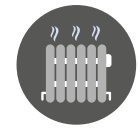
6 Never smoke in bed



7 Keep matches and lighters away from children



8 Keep clothing away from heating appliances



9 Take care in the kitchen. Accidents whilst cooking account for 59% of fires in flats



10 Take special care when you are tired or when you've been drinking alcohol

If you see a fire door, dry riser, refuse chute or other safety feature damaged or vandalised then report it immediately to us.

If the fire is in your home, you should evacuate and call 999.

If the fire is somewhere else in the building and you are not in immediate danger, you should call 999 and 'stay put' until the fire service can evacuate you safely.



If you have any questions, contact us:

www.newportcityhomes.com

Newport City Homes,
Nexus House, Mission Court,
Newport NP20 2DW



01633 381111



enquiries@newportcityhomes.com



NewportCityH



@NewportCityH