



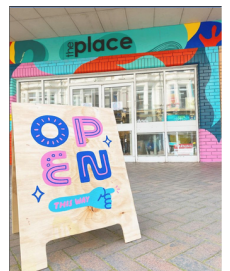
NEWPORT 'CITY BUZZ' NETWORK



Welcome...

to our first City Centre Buzz newsletter, where all our community groups and partners will be able to provide you with an update all in one place.

The City Centre Buzz group was formed during covid to bring together new community groups. It has been an exciting time to work together on projects, support and collaborate together and expand our services for the people of Newport. Together we are creating a new community in the city centre, investing, and evolving!



The Prince's Responsible Business Network
Cymru



Bwrdd Iechyd Prifysgol Aneurin Bevan
University Health Board



NEWPORT CITY HOMES

Newport City Homes are continuously investing within the city centre creating new residential opportunities and improving the commercial units. NCH has renovated and refurbished unused buildings to bring 104 homes and a further 96 units pending completion. By 2025 NCH would have created 268 new homes within the City Centre.



(Artists impression) The former Majestic Hall on Stow Hill is being refurbished to provide 15 two-bedroom apartments, 21 one-bedroom apartments and a commercial unit, ready for new customers this year.

Matt Davies, executive director of development, said:

“We are **proud** to be playing a role in the regeneration of Newport City Centre.”

“And it’s not just new homes, in some of our buildings we have been able to improve the **quality of retail space** to bring in new businesses.”

“A **thriving community** of residents, shoppers and businesses is essential for a successful city centre.”



The upper floors of a landmark building on Upper Dock Street have been refurbished into 18 new apartments, available to rent privately through Peter Alan

Everybody needs good Neighbours

Our 'Meet the Neighbours' event is a chance for people living locally in the City Centre to swing by to **The Place on Bridge Street**, for an evening of free activities, and to see what’s on offer in your city.

Keep an eye on **The Place Facebook page** for details of the next one!





Scan Me

Fly over the city in this drone video, and see all the areas Newport City Homes is building new homes and investing in communities.

COMMUNITY BENEFITS

Newport City Homes support local community groups, and in the City Centre we've been working with:

- The Gap Wales
- Newport Cycle Hub
- Tin Shed Theatre
- The Place
- No Comply Skate Park
- The Dolman Theatre
- King's Church
- Hot Yoga Health
- St Woolos Primary School
- The Share Centre
- And many more...

The Gap Wales Project

<https://www.youtube.com/watch?v=pZlWaeoYrg8>

No Comply - Skate Park

[No Comply Skate Park - YouTube](#)

We have also been able to support **apprenticeship opportunities:**

Apprenticeship – Brychan Lock – Stowe Hill Development

[Teenage apprentice starts work at city centre building site | \(newportcityhomes.com\)](#)

To hear more about our community benefit opportunities, contact Laura Palfrey at

laura.palfrey@newportcityhomes.com



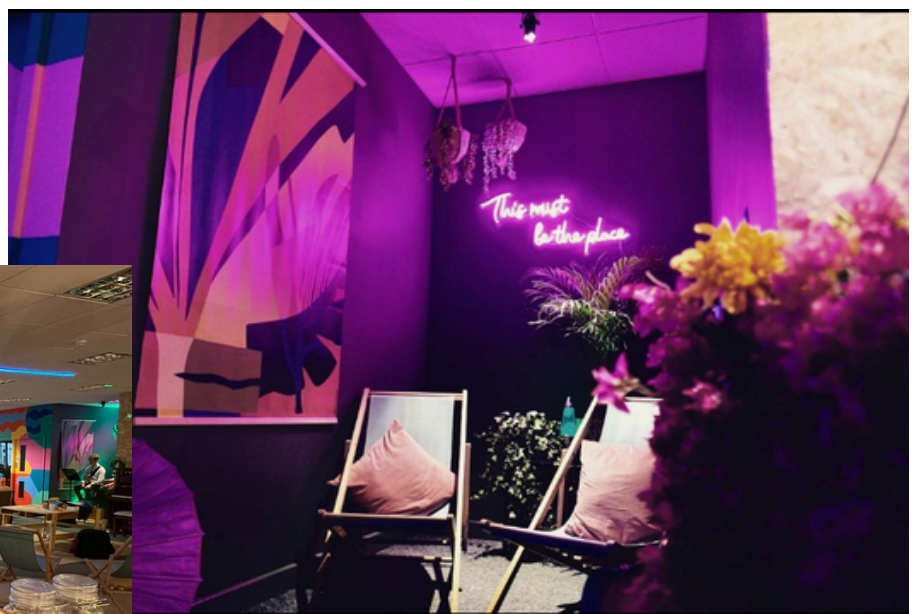
THE PLACE

The Place is a not for profit, community interest building, developed through lengthy community consultation and is located at the heart of Newport City Centre. It is a multi-functional art and community space that has been transformed and curated by **Tin Shed Theatre Co.**



Driven by a circular economy framework, The Place is driven by the funds and hands that support it. All funds are reinvested to support the ongoing activities and running costs of the building and to pay for a team of freelancers to run the joint.

At The Place, we have a number of artist studios, workshop spaces, meeting spaces, wellbeing studios and more, all for hire, supporting creatives in Newport and surrounding areas, with co-working facilities and networking opportunities.



CONTACT: meet@theplacenewport.com



REALITY THEATRE CIC

Reality Theatre CIC Ltd is an issue-driven community arts organisation based in the Cab, Cambrian Road, using theatre, performance, film and music to engage with marginalised communities. Generally, our participants tend to have a range of protected characteristics, and we have a particular focus on older people and young people with additional needs. Our aim is to support people in tell their stories, to raise the profile of marginalised groups and to help change attitudes through our work.



We currently deliver around 10 sessions a week, either in-house at our city centre venue, the Cab, or as outreach: 4 x to older people aged 60+, 4 to young people with additional learning needs (ALN), 1 to adults with ALN, 1 x Grow Share and Swap Gardening Group open to anyone, as well as 2 x Community Drop-In Days. We run a monthly Variety Night for emerging musicians, artists, poets, etc to perform, and produce around 7 x performances per year, as well as producing short films for commissions, the next which is being shown in the Pierhead Building this summer, sponsored by Jayne Bryan MS.

Events/activities coming this summer:

- the Big Bake-Off on Friday 9th June 1pm, all proceeds going to Alzheimer's Society – come along for cake and afternoon tea!
- Variety Night, the first Thursday of every month (next one June 1st)
- Grow, Share and Swap Gardening Club, every Friday 11.45
- Theatre Arts Club, every Friday 10.30am
- A range of punk gigs throughout the year

Contact

therealitytheatrecomany@gmail.com or
telephone 07557300298 for further
information, or pop into the Cab and say
hello!



The Prince's
Responsible
Business Network
Cymru

BUSINESS IN THE COMMUNITY



In March, BITC's Newport Place Programme worked with Ringland Primary School and BITC members and partners to deliver a timetable of role model visits and field trips. These experiences gave pupils hands-on experience of a diverse range of careers to help start the process of breaking down traditional career stereotypes. The children visited KLA and University of South Wales and were visited by representatives from organisations including Mott Macdonald, Linc Housing Association, South Wales Argus and Gwent Police.

Newport is Business in the Community's (BITC) first Place project in Wales, following 8 Place projects established across England. BITC's Place Programme brings everyone together in communities to act collaboratively. It draws on the strengths, ideas, and assets of everyone in that community - whether a business, a community organisation, or from the public sector - to help drive lasting change for local people and families.





RE:MAKE NEWPORT



RE:MAKE Newport is the first permanent repair cafe and library of things on a high street in Wales. We aim to make repairing, reusing and borrowing as easy as possible for our community. Our volunteers are on hand every day Tues – Sat for free repairs and to help you to access the library which houses tools, gardening equipment, camping kit and much more!



hello@remakenewport.org
www.remakenewport.org



TRAMSHED TECH



Tramshed Tech Griffin Place is just a 5-10 minute walk from Newport Train Station, occupying 12000 sq ft across 3 floors, and offers the perfect flexible office space to rent in the heart of Newport.

With almost 40 workspaces to include coworking, office space, meeting rooms, event space and a podcast studio - you've got everything you need to start and scale a business conveniently situated in Newport - the gateway to Wales.

Find us to the right of Tiny Rebel and the left of Newport Market.



Whether you're a freelancer, startup, or part of a business, Tramshed Tech is offering 20% OFF all meeting rooms across May and June.

Tramshed Tech is an ultra-connected community of startups built with flexibility and innovation in mind. We focus on three core elements; flexible workspaces that grow with you, startup and scaleup support programmes, and business skills training.

Tramshed Tech
High Street
Newport
NP20 1FX

CONTACT: newport@tramshedtech.co.uk



NEWPORT PLAYGOERS

DOLMAN THEATRE

Newport Playgoers Society (NPS), based in the Dolman Theatre, provides the main amateur dramatic outlet in the city. We have been around since 1924 and have administered the Dolman Theatre since 1967. Our plays are staged in September, October, November, December (youth production), January, February, March, April, May and June, usually during the third week of the month.

They run from Wednesday to Saturday, starting at 7:15pm, with a matinee performance only at 2pm on the Saturday.



NPS is, at its heart, a membership society which offers opportunities to contribute in a variety of ways. Many of these are directly related to what goes on on-stage but we rely heavily on volunteers to carry out essential ancillary tasks like administration, staffing the bar, selling sweets and ice creams, creating floral decorations, stewarding, publicity, etc.

BUT, if you want to join just to watch the plays, that's fine. Most of our members fall into this category. The annual subscription includes admission to all the adult productions at a discounted rate.



01633 263670

manager@dolmantheatre.co.uk



THE GAP. WALES

The Gap Wales is a charity committed to serving the people of Newport, South Wales and the surrounding areas.

We try to find opportunities to “fill the gap” where existing services and charities are not able to meet the needs of members of our community.



Here at The Gap – Wales, we’re passionate about working in our local communities in Newport, providing support where we can to people who find it difficult to get the help they need through existing services.

Whether refugees and asylum seekers, those homeless and vulnerably housed people who need a bed for the night or victims of human trafficking – we want to do all we can to make them feel welcome in our communities and provide them with what they need to build fruitful and fulfilling lives.

We work with other organisations, statutory bodies, schools and community groups to let people know about the issues faced by some of the most vulnerable people in our society – and how they can help.

We are also here for people who have experienced bereavement and are finding it difficult to cope.



'NEWPORT CYCLE HUB'

managed by The Gap Wales

Thanks to support from NCC WG and NCH, Wales' first 24/7 indoor secure bicycle storage has opened at 24 Skinner Street, a previously empty shop near to the bus station.

The established business Spokesafe runs the online booking system via an app which allows users to book a payg space for their bicycle for just £1, or pay monthly for £17.50. Toilets and a code operated locker are also included in the price.



With verified users only, monitored cctv and unique door entry codes the project will boost Active Travel into the City Centre by giving peace of mind about the very real risk of theft or damage to bikes left in the city centre. It also reduces congestion and pollution, whilst giving its users a boost to their physical and mental health

www.spokesafe.com/newport to set up an account for free.

The shop also houses a bicycle recycling scheme run by The Gap Wales in the basement, which repairs donated bikes, and gives away over 200 bikes a year to newly arrived refugees, saving the bikes from the scrap heap. The project is zero waste, recycling its tyres, inner tubes and metal.

Why not consider cycling into the city centre and storing your bike securely at the Newport Cycle Hub ?



NEWPORT CITY COUNCIL

Newport City Council ran a Participatory Budgeting (PB) programme this year which allowed community groups and individuals to bid for funding on stage in front of Newport residents. The audience then voted for the projects that they wished to be supported and the projects chosen received funding.

This programme was the third in a series that has been jointly funded by Aneurin Bevan University Hospital Board and Newport City Council. The focus from each event has been to encourage individuals and groups to apply for a share of funding in line with specific themes set by, in this case, the council. The themes that applications had to connect in this programme were:

1. Building safer, stronger, and more resilient communities
2. Improving people's health, wellbeing and independence
3. Reducing inequalities, tackling disadvantage, and supporting our most vulnerable people
4. Tackling the climate and nature emergency, through climate action and protecting, and enhancing biodiversity
5. Making Newport a better place to live, work and visit

The pandemic played a key part in the planning and delivery of previous programmes, but it was decided early in the planning stage that all being well, the PB voting events for this programme would be delivered face to face rather than online.

The funding available for this programme was provided by Newport City Council and ABUHB. The total pot amounted to £300,000.



OUR VOICE OUR CHOICE OUR CITY
EIN LLAIS EIN DEWIS EIN DINAS

Funding Stronger Communities
Ariannu Cymunedau Cryfach

Our Voice, Our Choice, Our City

The website which was opened to keep applicants informed about up-and-coming participatory budgeting has now become an information sharing focus and is a good place to find out what is going on in the community. It is also a good place for organisations to inform others what they are doing or what they need.

FACEBOOK:
NewportFundingStrongerCommunities

participatorybudgeting@newport.gov.uk



NEIGHBOURHOOD WATCH

Residents join Neighbourhood Watch for many different reasons, whether it is to improve safety around their home or to become part of a group and meet new people. It is widely regarded that being part of Neighbourhood Watch can:

- Reduce / prevent local crime and disorder
- Reduce fear of crime
- Address issues relating to anti-social behaviour
- Create safer neighbourhoods
- Build community spirit and cohesion
- Reassure members of the public
- Enhance partnership working with other community groups
- Assist in the detection and apprehension of criminals through members providing information to the police
- Improve quality of life and the local environment.



Neighbourhood Watch Week
3rd - 9th June 2023

"Making this a better place to live"



If you would like any further information or interested in signing up to Neighbourhood Watch please visit:

www.ourwatch.org.uk

CONTACT:

neighbourhoodwatch@gwent.police.uk



PERIOD PROUD WALES

Welsh Government believes that anyone who menstruates should be able to access the period products that they need. To make this possible they fund the distribution of free items to those people.

They are especially aiming to provide the required items to people who are in financial hardship as well as those who would not be able to access these items for any other reason.

**BALCH | PERIOD
O'R MISLIF | PROUD**



#BalchOrMislif
llyw.cymru/balchormislif

#PeriodProudWales
gov.wales/periodproud

Another aim with awareness of the Environmental damage disposable items contribute towards, is to promote the use of reusable products and organic items. As the cost often stops people from trying these products they are happy to give these out when requested.

In Newport all schools and many community organisations have a good stock of period products available to give to anyone who needs them. Any organisation who has not yet accessed this service can send in an order form and will be sent items on a three monthly basis.

Newport City Council also now provide a service where individuals can request an order to be sent directly to their home.

A dedicated web page has been developed which links to the plan, resources and information on the period dignity grant.



THE ONLINE CONNECTION TO YOUR COMMUNITY

Your Newport, Your Wellbeing.

A **free** wellbeing map to help you find **wellbeing services, activities & organisations** in Newport.

yournewport.co.uk



With everything from clubs and activities, to groups and organisations, you can use this free map to find things to help you and your family enhance your health and wellbeing.

You'll find all the information you need to take part in activities or to ask for help, which you can use to start improving your well-being today!

If you are a community group or organisation and would like to be added to the online directory and interactive map, please send us an email to: **info@yournewport.co.uk**.

